



Johan Potgieter
0829083423
johan@redtableproperties.co.za



Kobus Potgieter
0829039208

kobus@redtableproperties.co.za

Contact Head Office

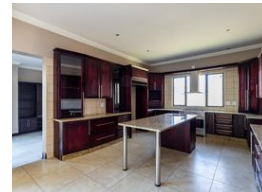
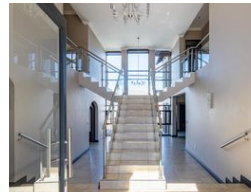
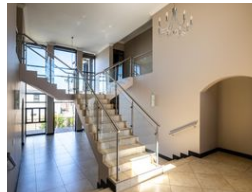
082 9039208

21 Silver Fountains, Silver Lakes Golf Estate

FEATURED



Web Ref RT5088



R4,700,000

4 4.5 4

Monthly Bond Repayment R48,512.85
Calculated over 20 years at 11% with no deposit.

Transfer Costs R367,177.00 **Bond Costs** R59,150.00
These calculations are only a guide. Please ask your conveyancer for exact calculations.

Monthly Levy R1,600 **Monthly Rates** R3,400

beautiful home in Country View Estate

This stylish four-bedroom home offers luxurious living in Country View Estate, Pretoria East. Its excellent location in a quiet cul-de-sac is just one of this property's many standout features.

The main floor boasts a grand entrance with an impressive double-volume ceiling and an open-plan design that seamlessly extends to the dining area. This floor holds the living areas, which also include a lounge next to the kitchen and an entertainment room with a built-in bar, braai, and stacking doors that open to a lovely swimming pool and sun patio. The kitchen is spacious and functional with a separate scullery, perfect for everyday living and effortless entertaining.

Upstairs, retreat to four spacious en-suite bedrooms, each thoughtfully designed with full bathrooms to ensure comfort and privacy. The main en-suite bedroom...

Features

Pets Allowed Yes

Interior

| | |
|--------------|-----|
| Bedrooms | 4 |
| Bathrooms | 4.5 |
| Kitchens | 1 |
| Recep. Rooms | 3 |
| Studies | 1 |

Exterior

| | |
|-------------|-----|
| Garages | 4 |
| Security | Yes |
| Dom. Accom. | 1 |
| Pool | Yes |

Sizes

| | |
|------------|-------------------|
| Floor Size | 493m ² |
| Land Size | 750m ² |