



Johan Potgieter
0829083423
johan@redtableproperties.co.za



Kobus Potgieter
0829039208

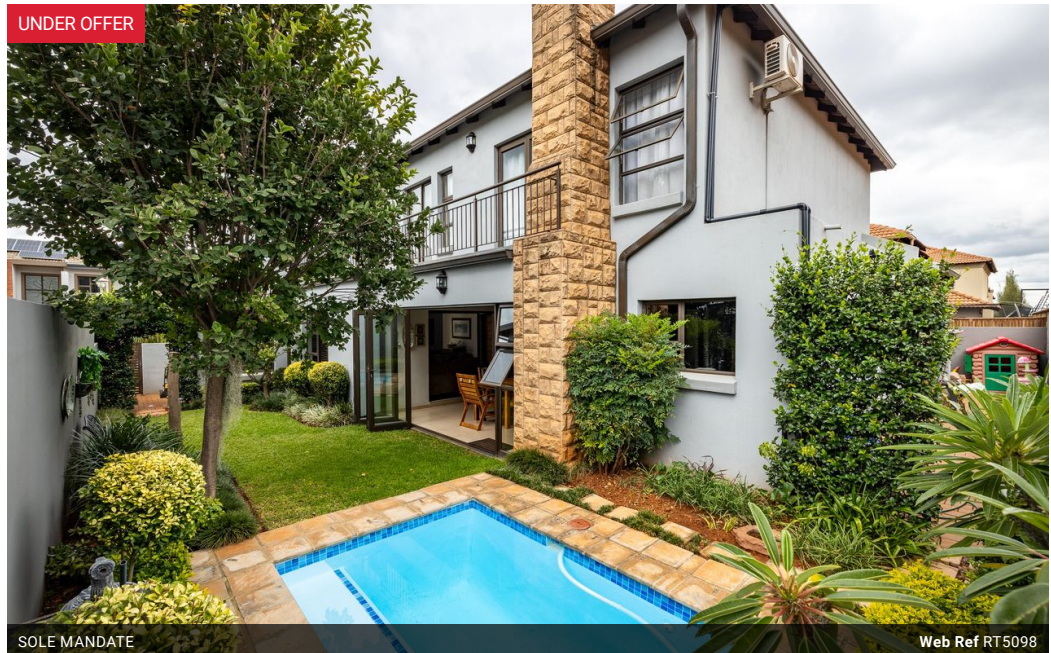
kobus@redtableproperties.co.za

Contact Head Office

082 9039208

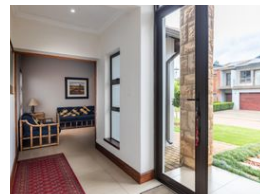
21 Silver Fountains, Silver Lakes Golf Estate

UNDER OFFER



SOLE MANDATE

Web Ref RT5098



R3,390,000

Monthly Bond Repayment R34,991.19
Calculated over 20 years at 11% with no deposit.

Transfer Costs R207,447.00 **Bond Costs** R45,955.00
These calculations are only a guide. Please ask your conveyancer for exact calculations.

Monthly Levy R2,175 **Monthly Rates** R1,488

3 2 2

Modern Living in Bridgefield Estate, Olympus

Exclusive Mandate

This well-designed home in Bridgefield Estate offers a seamless blend of modern elegance and functional living spaces, perfectly suited for comfortable family living.

The ground floor welcomes you with an inviting entrance hall, leading into an open-plan layout that effortlessly connects the kitchen, dining area, and main lounge. This space flows into a spacious braai room, featuring a built-in braai, ample storage, and stacking doors that open to the garden and heated splash pool-ideal for year-round entertaining. The modern kitchen is complemented by a separate scullery/laundry room with generous cupboard space and a pantry. A second lounge on this level provides flexibility as a study or additional living space. Practical conveniences include a guest toilet, a double garage, and staff...

Features

Pets Allowed Yes

Interior

Bedrooms	3
Bathrooms	2
Kitchens	1
Recep. Rooms	3
Studies	1

Exterior

Garages	2
Security	Yes
Dom. Accom.	1
Pool	Yes

Sizes

Floor Size	295m ²
Land Size	452m ²